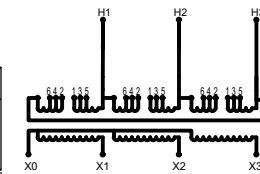
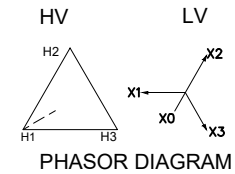
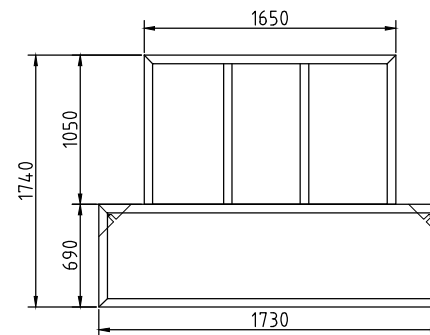
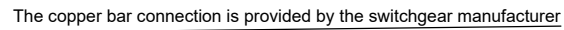


Technical drawing of a rectangular plate with two holes. The overall width is 89, the distance between hole centers is 44.5, and the hole diameter is 1/2-13UNC. The plate thickness is 51.



CONNECTION DIAGRAM

ITEM	WEIGHT
COILS AND CORES WEIGHT	3660Kg
TOTAL OIL WEIGHT	2700kg
TOTAL WEIGHT	7650Kg

19	HINGED DOOR	1
18	RADIATOR	3
17	1" DRAIN VALVE WITH 3/8 SAMPLER	1
16	750-4000 PADMOUNT LV PLATE	1
15	LV BUSHING 4 HOLES, BIL 30KV	4
14	DOOR HANDLE	1
13	OIL TEMPERATURE GAUGE	1
12	OIL LEVEL GAUGE	1
11	VACUUM PRESSURE GUAGE	1
10	PRESSURE RELIEF VALVE	1
9	1" UPPER FILL PLUG	1
8	NAMEPLATE	1
7	FLIP TOP COVER	1
6	BOLTED REMOVABLE TANK LID	1
5	LIFTING LUG	4
4	JACK	4
3	5 POSITION TAP CHANGER +/- 2x2.5%	1
2	GROUND STEEL PADS	1
1	HV BUSHING (15KV ,BIL95KV)	3
ITEM	DESCRIPTION	QTY
	OPTIONAL TRANSFORMER PARTS LIST	

TYPE					DWG. NAME				
ZGS-H-3000/4.16/0.415					General Assembly Drawing				
DRAWN	CHECKED	CHECKED		APPROVED	FIRST ANGLE PROJECTION	SCALE	1		
									REV. NO.
									